

Healthy Islands for the Pacific: Country Led and Country Focused

Jun Gao

PHS, DPS/WHO

Mar. 2023

Healthy Islands Vision

- Declared in 1995 by Pacific Health Ministers in the Yanuca Island Declaration.
- Healthy Islands are envisioned as:
 - Children are nurtured in body and mind,
 - Environment invite learning and leisure,
 - People work and age with dignity,
 - Ecological balance is a source of pride, and
 - The ocean which sustains us is protected.



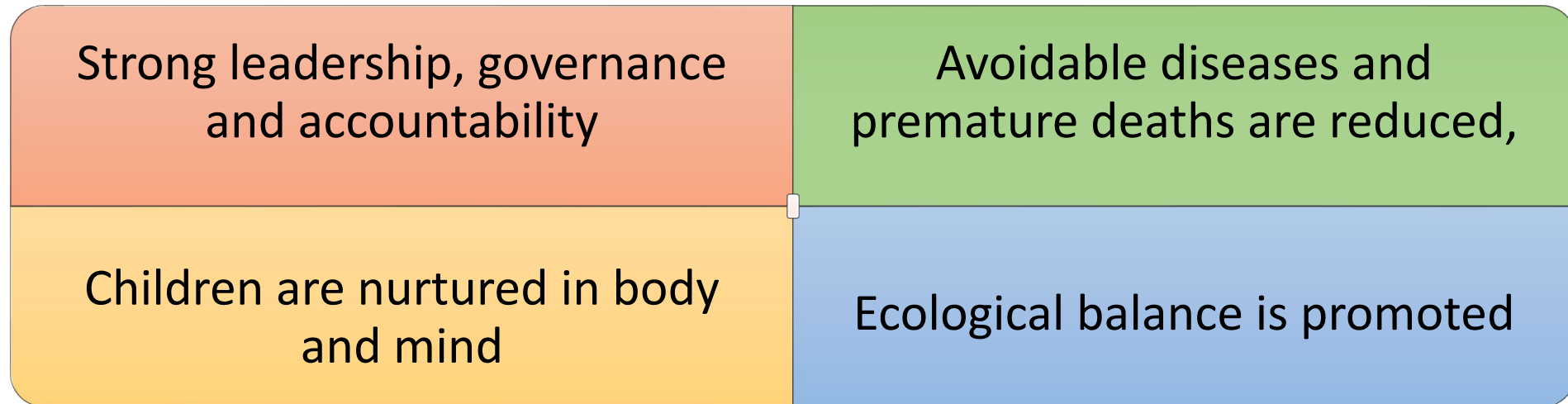
Healthy Islands Vision

- At the 11th Pacific Health Ministers Meeting in 2015, health ministers agreed that:
 - The Healthy Islands vision remains the unifying theme to guide health development in the Pacific
 - A governance framework is needed to monitor progress and report actions towards the Healthy Islands vision
 - The PHMM mechanism should be leveraged to hold Pacific Island countries and areas (PICs) accountable



Healthy Islands Monitoring Framework

- Development was led by Pacific health ministers, supported by development partners
- Two-year process, six revisions
- Final version has 48 core indicators covering:



Why country led and focused

- Objectives of Healthy Island Monitoring Framework:
 - Tracking progress towards the Healthy Islands vision across all PICs
 - Improve health development in all PICs.
- Established and agreed upon reporting process.
- Need to track changes in countries (SDGs, and important changes in PICs)
- Facilitate country decision making to achieve Healthy Islands vision

Conducted **across all PICs** to inform decisions, actions and changes **focused on each PICs**.

Whether possible to use at country level

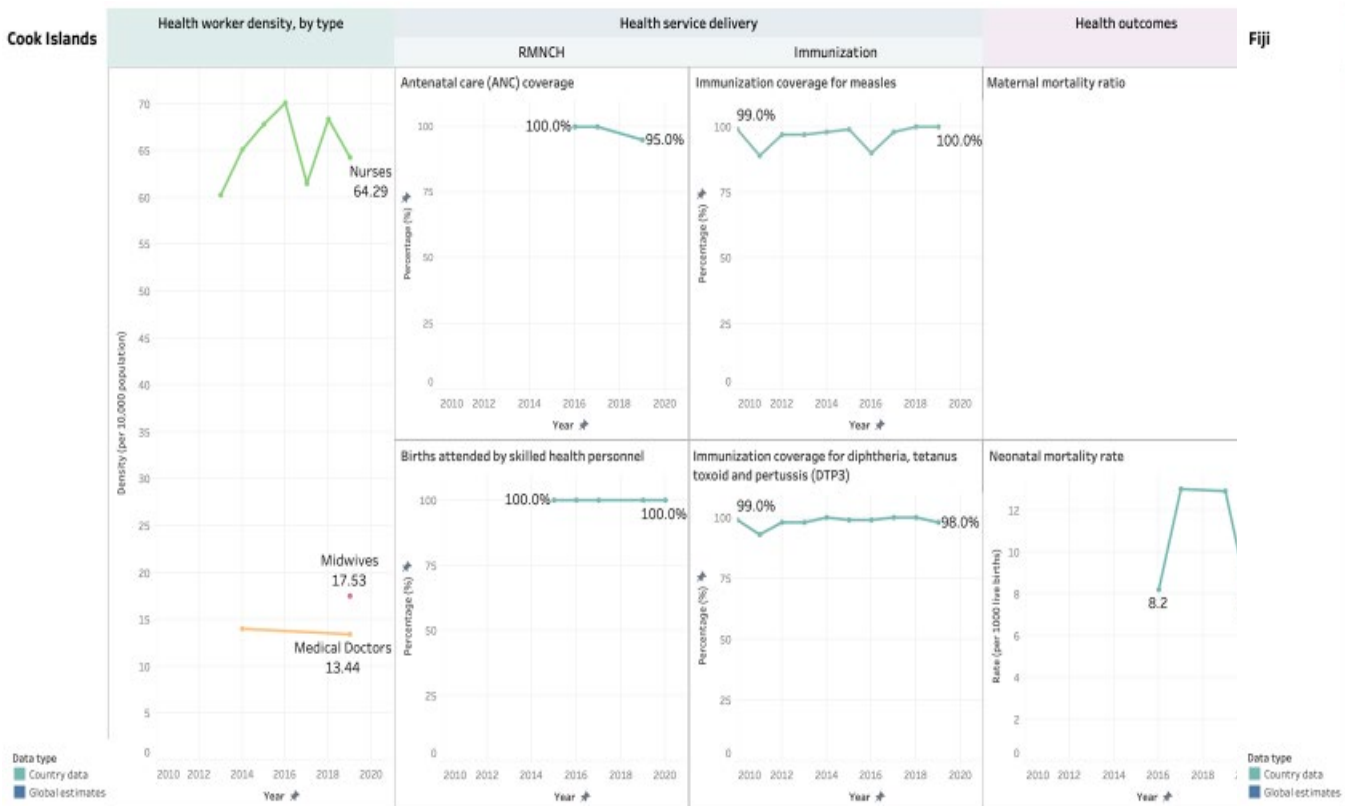
- **Weaknesses**

- Data collected cross all PICs every 2 years with some misreported data
- Indicators measure a mix of health impact, outputs, policies, etc.
- Data collected is a mix of country reported data, program monitoring data, and global estimates

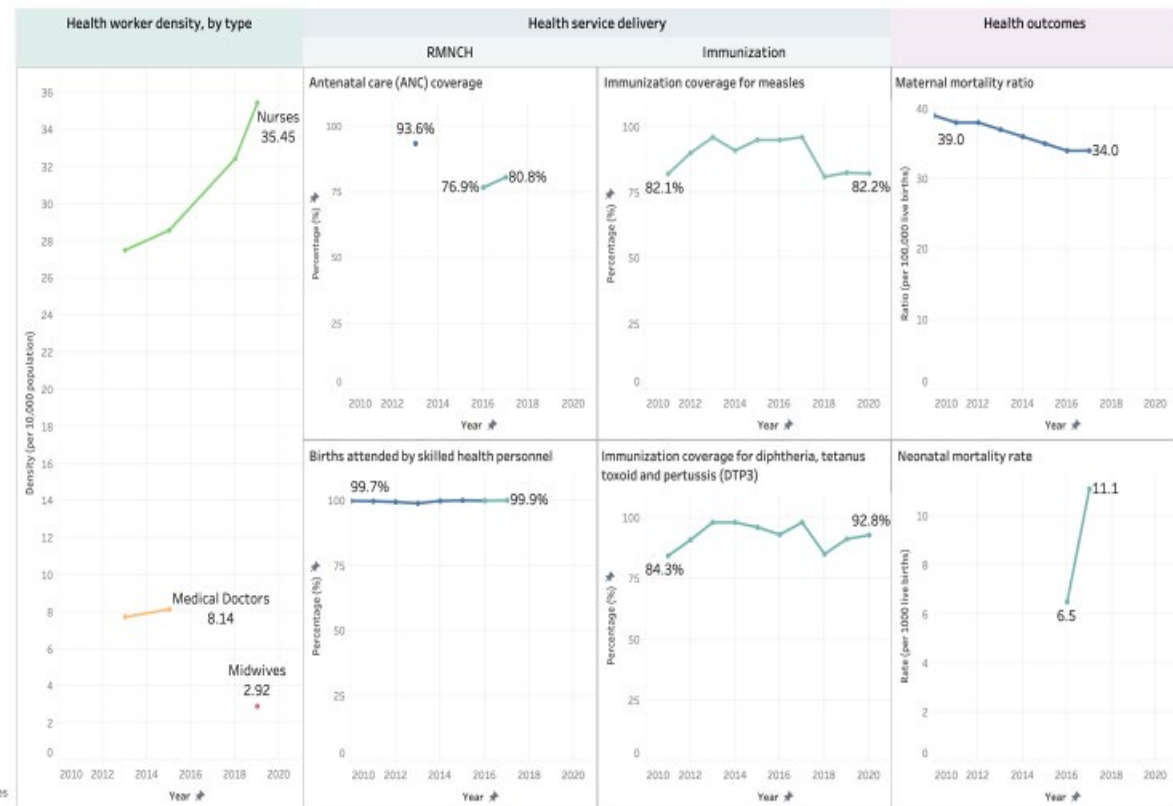
- **Advantages**

- Longitudinal data collection from 2015 to present
- Common indicator meta-data (although some problems identified)
- Most data validated by country HIS focal points
- Uses data existing in countries and across PICs

Whether useful at the country level

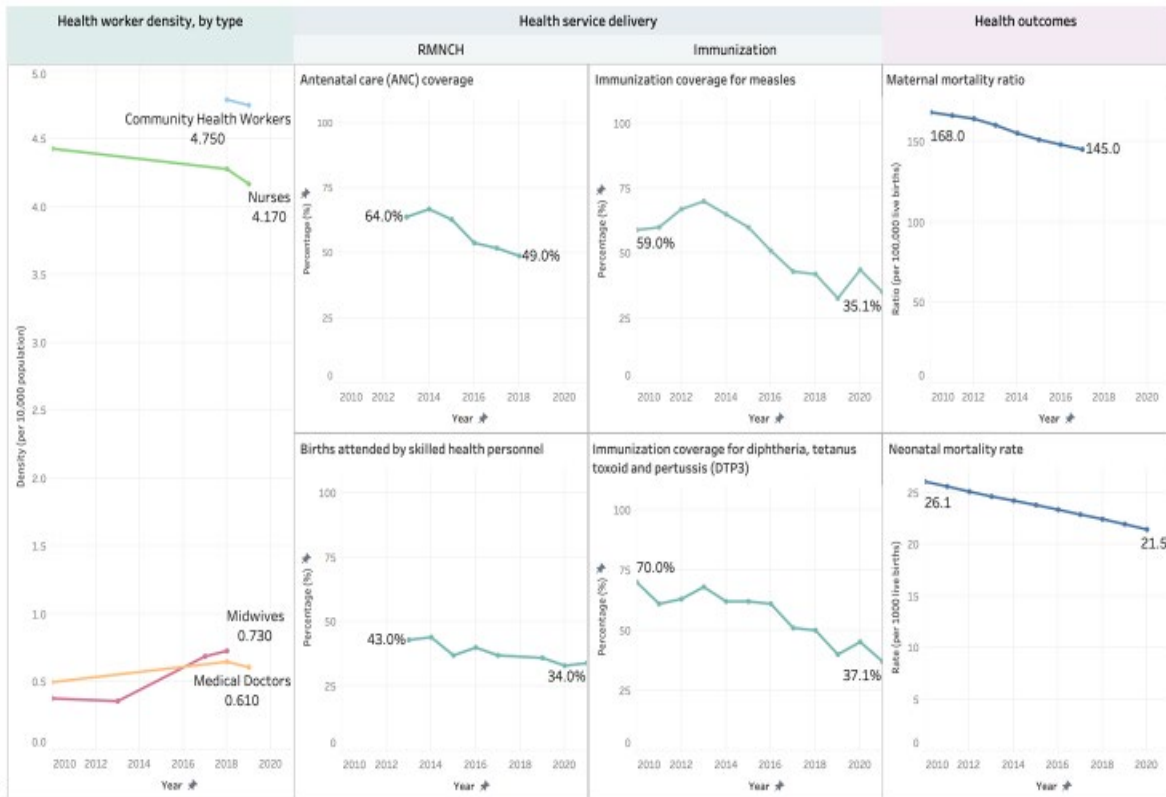


Fiji

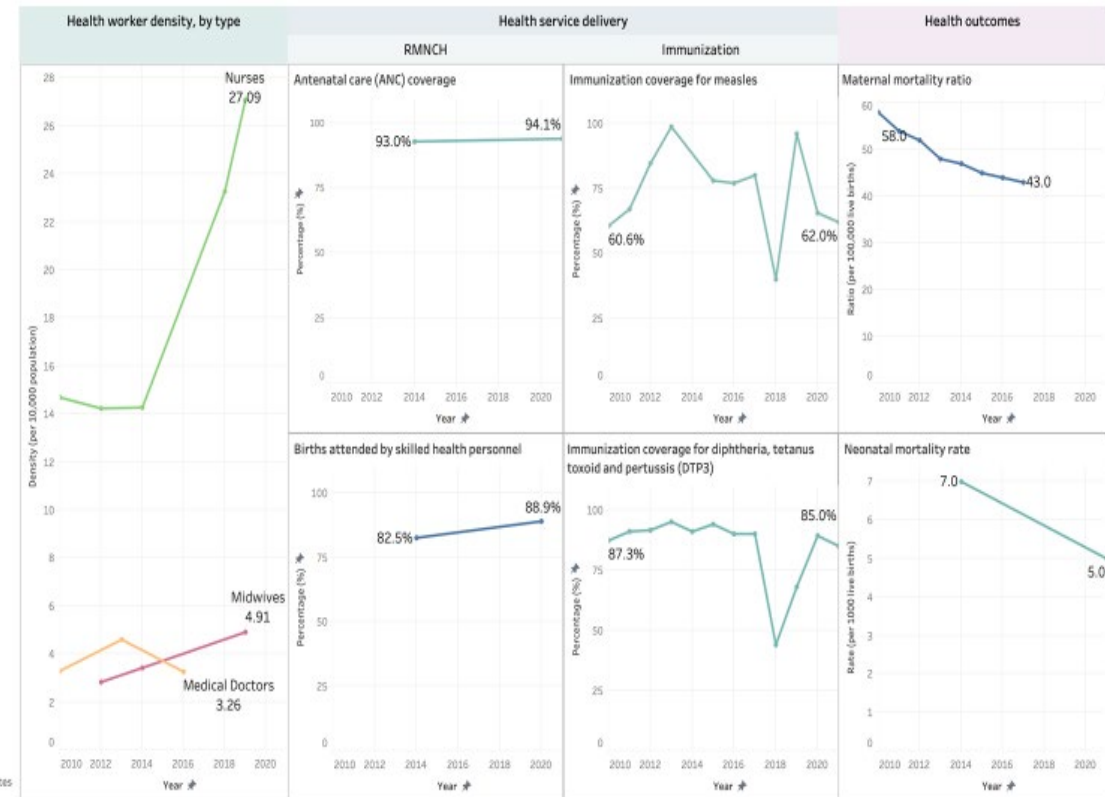


Whether useful at the country level

PNG

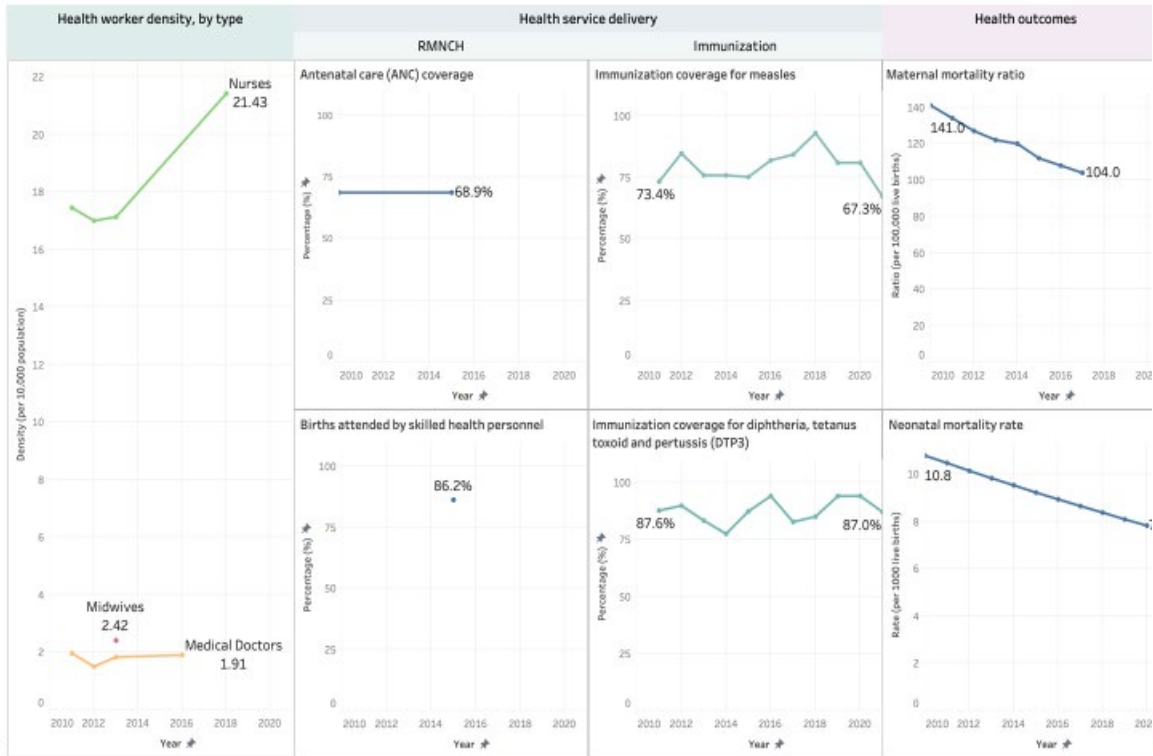


Samoa

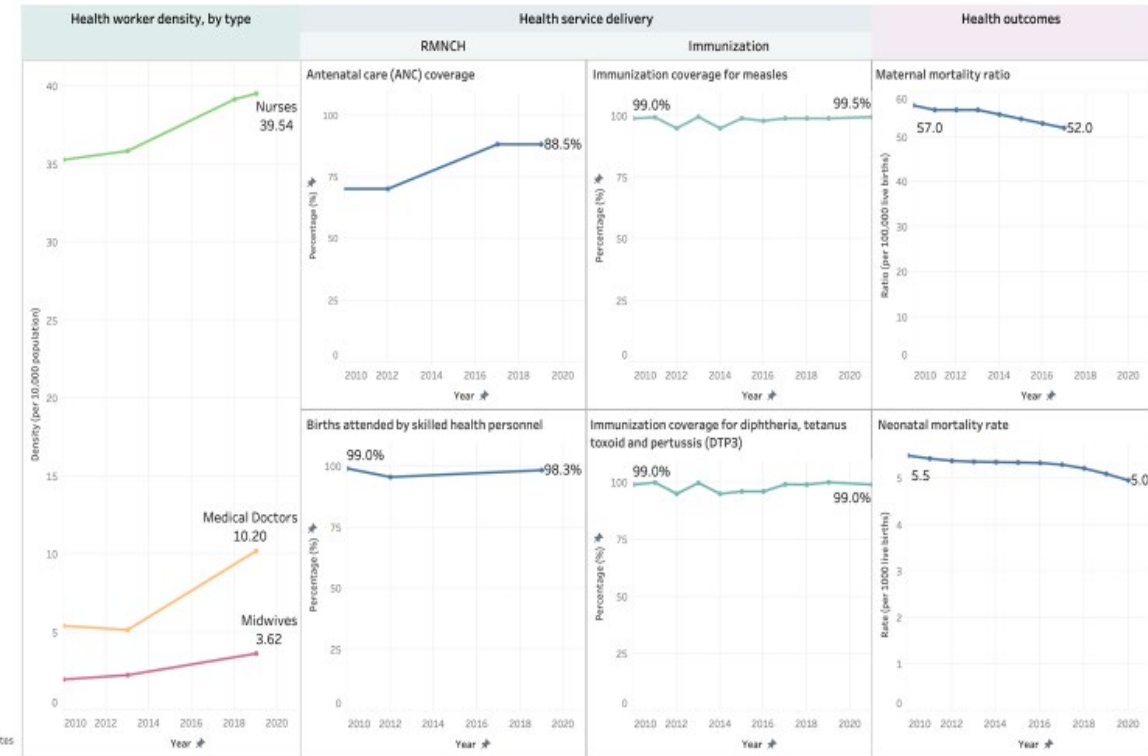


Whether useful at country level

Solomon Islands



Tonga



How to promote HIMF use in PICs

- Country ownership and lead by countries
- Explore the needs from countries (decision needs, data availability)
- Better integrated and processed data at country level
- Try, discuss, and share (doing is the best way to learn)
- Tools (dashboard), capacity, and supports
- Move ahead and learn together

Importance of PHIN

- PHIN members are in a unique position lead their PICs to successfully complete HIMF progress review
 - PIC-created, PIC-led
- As technical experts, lead coordination of data collection between ministries and programmes, validation of data quality, and ensure timely reporting
 - With support from WHO and SPC as needed



What actions and changes are needed?



Thank you!

For more information:

Gao Jun

Email: gaoj@who.int