

Interim Guidance for COVID-19 Case Management

28 May 2020

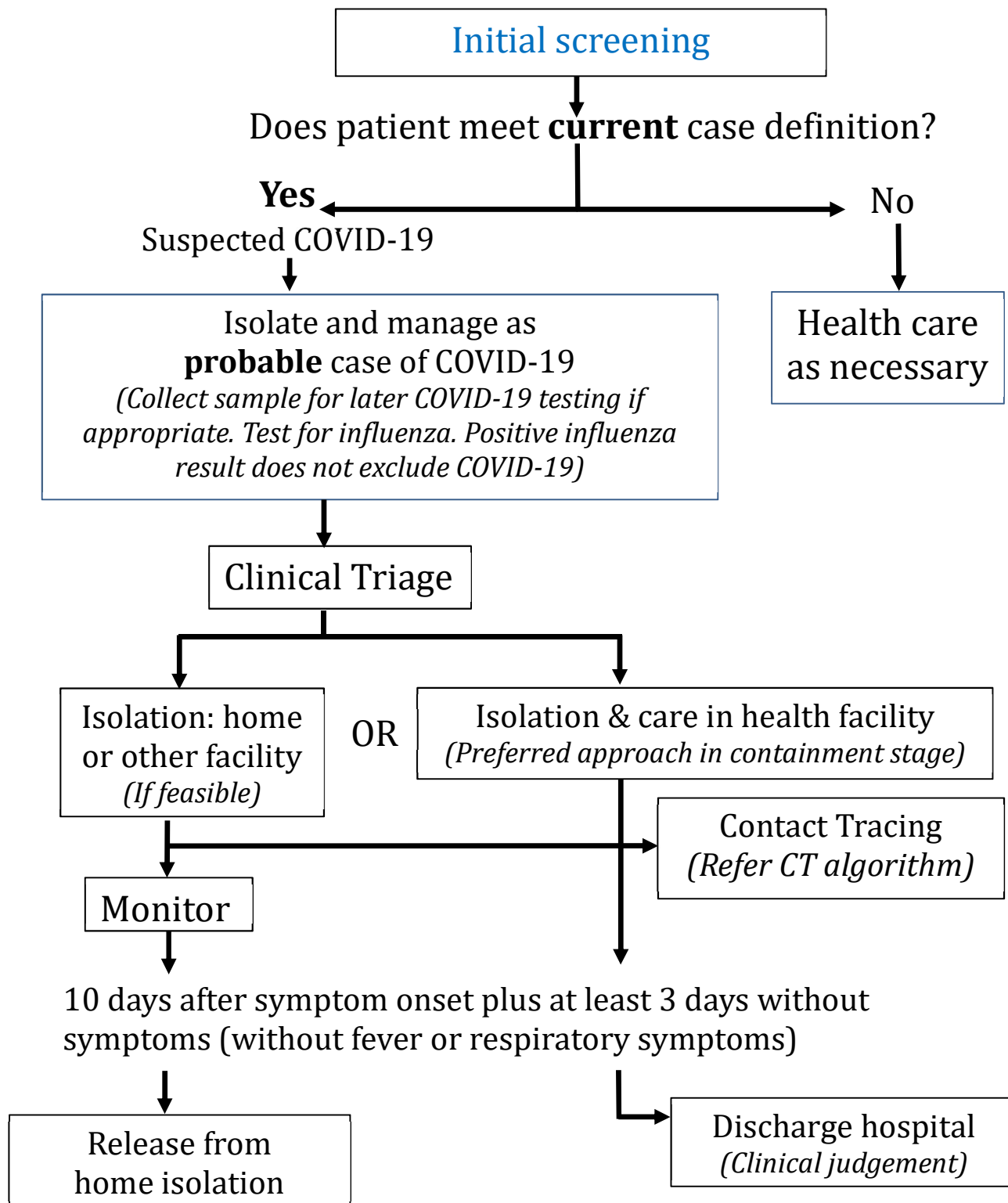


Pacific
Community
Communauté
du Pacifique



World Health
Organization
Representative Office
for the South Pacific

Applicable where testing for COVID-19 is NOT available.



Notes: Case definitions and other advice may change. This flow chart should be used in conjunction with relevant guidance documents.